

# THE "Classic" SHRINKBUNDLER FROM OMEGA

*Ideal for  
Pharmaceutical,  
Personal Care,  
Food, Beverage  
and Chemical  
Products Packaging*

*This Highly Versatile  
System Collates, Unitizes,  
Wraps & Safeguards  
A Wide Array of  
Packaging Products*

*We specialize in container  
and carton handling for  
even the most difficult  
applications.*

- User Friendly Design
- State-Of-The-Art Electronics
- Automatically Collates and Packages Into A Unitized Bundle
- Unitized Bundles Protect Against Label Marring
- Uses Low-Density Polyethylene Film
- Film Clarity Provides Instant Product Identification



## STANDARD FEATURES

- Compact design
- Welded plate construction
- Nedox coated seal bar
- Variable machine speed
- Powered film unwind system
- SCR controlled infeed conveyor
- Microprocessor based temperature controller
- PLC controls
- Compatible for cartons or containers
- Standard finish "Steel-It" paint
- Safety detection devices
- Clear vivak barrier guarding, electrically interlocked for operator safety
- Omega heat tunnel with package cooling system



## OPTIONAL FEATURES

- Interchangeable components for single to multiple lane operation
- Stainless steel frame construction
- Film perforation (vertical or horizontal)
- Operator interface terminal for product menu, machine status, film threading diagram and fault displays
- Centralized lubrication
- Various right or left infeed and discharge configurations
- Special control packages
- Low film detection
- Beacon tower

## WE'RE PACKAGING SYSTEM INNOVATORS

Omega Design specializes in the manufacturing of innovative shrinkbundling, container unscrambling and secondary orienting systems. Since we design, manufacture, install, train and provide technical service, we can improve the performance of your packaging lines. Let our technology enhance the efficiency and quality of your packaging operation.



# CUSTOM DESIGNED INFEED AND DISCHARGE SYSTEMS



Lane Dividing



Vertical Carton Stacking



Optional Vertical or Horizontal Film Perforation



90° Container Orientation



In-Line Bundle Discharge



5th Panel Carton Orientation

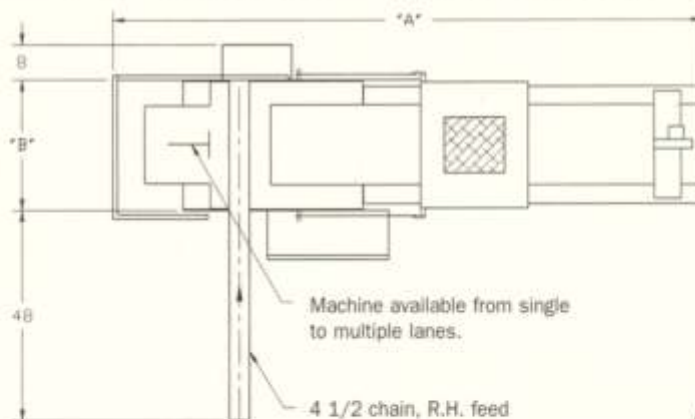


Right Angle Bundle Discharge

SPECIFICATIONS	MODEL 18	MODEL 27	MODEL 36
max. film width	17"	26"	35"
max. product height	11"	11"	11"
speed: up to depending on product size and pack pattern	120-150 cpm	200-240 cpm	240-300 cpm
Powered film feed	Yes	Yes	Yes
Available in multiple lanes	Yes	Yes	Yes
Programmable logic controller	Yes	Yes	Yes
Microprocessor temp. control	Yes	Yes	Yes
Infeed/Operating height	34"-38"	34"-38"	34"-38"
Compressed Air	2CFM @ 80 PSI	2CFM @ 80 PSI	2CFM @ 80 PSI
Electrical requirements	208V, 240V, or 480V, 3 Phase 60 cycle	208V, 240V, or 480V, 3 Phase 60 HZ	480V, 3 Phase 60 cycle

## DIMENSIONS

CLASSIC MODEL	A	B	MICRO (M) MODEL	A	B
18	131 1/2	32 1/2	18M	97 1/2	32 1/2
27	131 1/2	41 1/2	27M	97 1/2	41 1/2
36	131 1/2	50 1/2	36M	97 1/2	50 1/2



**OMEGA DESIGN CORPORATION**

211 Phillips Road ■ Exton, PA 19341-1336  
Tel: 610-363-6555 ■ FAX: 610-524-7398  
www.omegadesign.com ■ e-mail: sales1@omegadesign.com

